

eXceed Rx Bonding Guide



Chairside Guide:

For best results, bonding should be performed within four weeks from the date of impressions or intraoral scan. If the two arches are bonded separately, the 2nd bonding appointment should be within two weeks from the first.

1. Have the necessary materials ready:

a) Bonding agent:

- Assure[®] Universal Bonding Resin (recommended), or
- Adper Single Bond 2 (3M Unitek)
- OptiBond Solo Plus (Kerr)

a)



b) Etching Agent - 37% phosphoric acid

c) Adhesive:

- Flow Tain (recommended), or
- Transbond Supreme Low Viscosity (3M Unitek)
- BluGlo (Ormco) for aesthetic braces
- GreenGlo (Ormco) for metal braces

c)



2. Check patient's hygiene and cleanse thoroughly. Pumice, if necessary, to remove any buildup, paying special attention to the molars.

3. Apply Dri-Angles and Cheek Retractors to prevent moisture.

4. Apply phosphoric acid onto each tooth for **30-60** seconds. (Please consult manufacturer's instructions)

4.



5. Rinse with water, directing the stream at each tooth for at least **10** seconds.

6. Dry the surface of the tooth using an air dryer.

7. Gently apply the bonding agent to each tooth and remove any excess. (Please consult manufacturer's instructions).

8. Apply alcohol to the bases of the brackets and dry.

8.



eXceed Rx Bonding Guide

9. Evenly distribute the adhesive on the pad of the bracket. Use only a small amount, half of what's required for direct bonding. Work the adhesive into the bracket pad using a composite tool or spatula.

To minimize moisture build-up, try performing Steps 8-9 in parallel with steps 3-7.

10. Place the first tray in place and press firmly with middle and index finger, applying consistent pressure to the whole arch. Make sure that the tray sits tightly on the occlusal surfaces of the teeth.
11. Moving from the 2nd molar forward, light cure the tray for at least **20** seconds per tooth, **10** seconds from the gingival side and **10** seconds from the occlusal side*.

Repeat Steps 6-11 for the opposing arch.

12. Remove the dry angles and cheek retractors.
13. Using a scaler or index finger, grab the inside grip point and remove only the hard tray.

Repeat Step 13 for the opposing arch.

14. Light Cure the 1st and 2nd molars again for at least **20** seconds, **10** seconds from the gingival side and **10** seconds from the occlusal side*.
15. Moving from the 2nd molar forward, gently peel off the soft tray with a scaler.

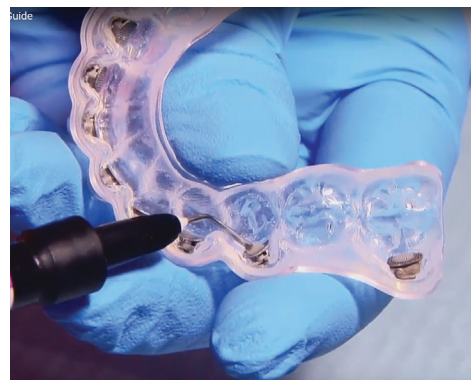
• Curing times may vary based on light and intensity. Please consult the curing lamp's manual •

16. Check each bracket for bond strength.

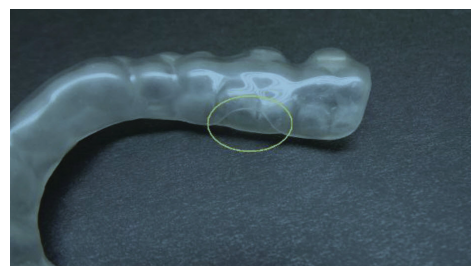
Repeat Steps 14-16 for the opposing arch.

17. Remove excess bonding material using a polishing burr.

9.



13.



15.



17.

