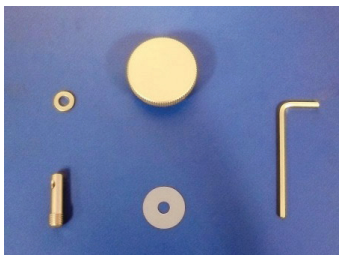


# The SAM<sup>®</sup> SE Articulator



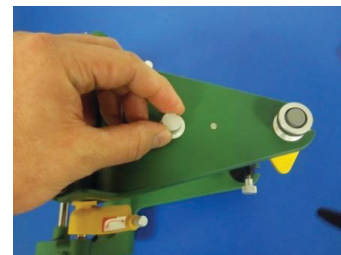
## Instructions for installing the ART 113 Mounting Plate Thumb Screw on the SAM<sup>®</sup> SE



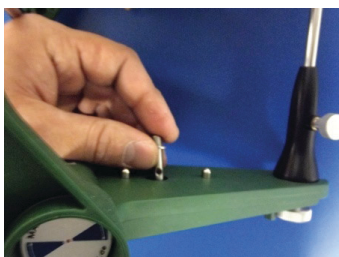
**1. Verify all parts pictured**



**2. Slide metal washer onto the threaded post**



**3. Remove magnetic plates using a 10mm wrench**



**4. Insert threaded post with the threads towards the inside of the articulator**



**5. Place plastic washer over the outside of the threaded post as pictured**



**6. Place thumb screw over the threaded post. Be sure to line up the set screw with the hole in the post**



**7. Tighten down the Thumb Screw set screw with the included Allen Wrench**



**8. Repeat steps on the opposite side of the articulator**

ART 113 Mounting Plate  
Thumb Screw 055-107

