

# Odyssey® 2.4G Diode Laser



## Benefits for the Doctor:

- Precise tissue modification
- Early bracket placement
- Fast, effective hemostasis
- Minimal or no bleeding
- Reduced treatment time
- Improved productivity
- High patient acceptance and satisfaction
- Increased revenue
- Ability to expand current services

## Benefits for the Patient:

- Maximum comfort
- Rapid healing time
- Minimal or no anesthesia
- Less chair time
- Optimal outcome

## Features:

- 810 ± 20nm wavelength
- Power: 5.0 Watt
- Wireless foot pedal
- Retractable optical fiber
- 3 Customized/programmable settings
- Continuous or pulse wave
- Compact and portable
- Size: 6 ¼"W x 8 ¾"L x 5 ½"H
- Weight: 5.5 lbs.

## Applications

### Orthodontic

- Crown exposure to aid eruption
- Operculectomy for faster band placement
- Treatment of gingival hyperplasia
- Gingival sculpting
- Ulcer treatment
- Frenectomy

### Restorative / Esthetic

- Gingival troughing for taking impressions (no cord to pack)
- Gingival sculpting
- Implant exposure
- Gingivectomy
- Frenectomy

### Palliative

- Fibroma removal
- Aphthous ulcer and herpetic lesion treatment
- Bacterial reduction in periodontal pockets

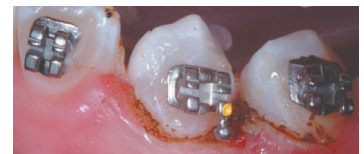


Before treatment



Partially erupted canine

After treatment



Bracket bonded after tissue sculpting



Gingival hyperplasia



Healthy gingival contour achieved

# Odyssey® 2.4G Diode Laser



## ***Included with your Odyssey 2.4G Laser:***

- 290-002** *Fiber Cleaver*
  - 290-003** *Fiber Stripper*
  - 290-004** *Protective Glasses - Solid sides style (Medium)*
  - 290-005** *Protective Glasses - Plain sides style (Small)*
  - 290-006** *Protective Glasses - Window sides style (Large)*
  - 290-007** *400 Micron Fiber Cartridge System*
  - 290-011** *Package of (20) Hand Piece Tips - 60 degree angle\**
  - 290-012** *Hand Piece - autoclavable\**
  - 290-015** *Power Cord*
  - 290-016** *Laser Safety Sign*
  - 290-017** *Laser Key*
  - 290-026** *Wireless Receiver*
  - 290-027** *Wireless Foot Pedal*
  - 290-064** *Foot Pedal 9V Lithium Battery*
  - Owner's Manual, Procedure Guide, and Warranty Card**
- \* (2) Tips Packages, (2) Hand Pieces included with initial purchase*

## ***Additional accessories:***

- 290-008** *400 Micron Replacement Cutting Blade*
- 290-009** *Package of (20) Hand Piece Tips - straight*
- 290-013** *Laser Hand Piece Fiber Locking Mechanism*

