

# Clinically Proven Sleep Appliances

## Great Lakes Sleep Appliances

### Confidently Treat Snoring and Obstructive Sleep Apnea

Great Lakes professionals will explain the features of each appliance so you can decide on the right solution for your patient's needs.

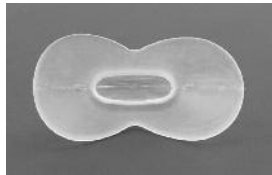
#### ■ MPOwRx™ Snoring and Sleep Apnea Appliance

**NEW!**



- Clinically proven
- Easy insertion
- Comfortable, secure fit
- Maintains shape
- One size fits most
- Convenient and effective

This unique non-custom device treats chronic snoring and sleep apnea by repositioning the tongue forward instead of relying on the mandible. Uses gentle suction, rather than the alveolar ridge or dentition, to stay in place. Allows patient to swallow comfortably. No impression needed. This appliance is not autoclavable.



#### Ideal For These Patient Types:

- Edentulous
- Periodontal problems
- TMJ Indicated
- Large tongue
- Complicated dentition
- Children
- Combination therapy with CPAP



**Great Lakes**

ORTHODONTICS, LTD.

An Employee Owned Company

200 Cooper Avenue, P.O. Box 5111

Tonawanda, New York 14151-5111

#### To order, or for more information:

Phone: 800-828-7626

Fax: 716-871-0550

E-mail: [info@greatlakesortho.com](mailto:info@greatlakesortho.com)

#### ■ Klearway™ Appliance

Backed by extensive research, this appliance offers ultimate control. Adjusts in increments of 0.25mm for gradual jaw positioning. Fabricated of comfortable, thermoactive acrylic, Klearway is easy to insert, conforms securely to teeth and permits lateral movement. Provides full occlusal coverage of both arches. Does not encroach on tongue space. The appliance is suitable for most patients including those who brux, have missing or complicated dentitions, extensive bridgework and/or short clinical crowns.



#### ■ NAPA Appliance

In clinical use since 1983, this proven treatment was developed by Dr. Peter T. George. The NAPA uses eight clasps and is constructed of hard acrylic to provide excellent retention. Comfortable to wear, the NAPA fits very much like a standard orthodontic appliance. An available option is the thermal active material Variflex™ (clasp optional). This variation will be trimmed scalloped to the gingival margin and is ideal for patients with sensitive teeth, crowns, bridgework or missing dentitions. Both versions of the NAPA appliance are available with the standard breathing beak or beakless option.



#### ■ Elastomeric Appliance

Made of soft custom-injected silicone, this appliance offers optimum patient comfort and compliance. No clasps or wires to adjust. Proven effective by the University of Kentucky Medical Center Sleep Apnea Laboratory. Recommended for partial edentulous patients and non-bruxers.



#### ■ Herbst® Sleep Appliance

The Herbst Appliance has been proven effective for chronic snoring and mild to moderate obstructive sleep apnea sufferers. This appliance allows patients some lateral and vertical movement without disengaging the appliance. Also, if the initial position does not provide anticipated relief, the mandible can easily be moved forward in 1mm increments by using advancement shims or in 1/4mm increments with our new telescopic attachment. The appliance can be made of hard acrylic or thermo-active resin. Not recommended for bruxers.



New Telescopic  
Advancement Hardware